



Data Express® DE75

APPLICATIONS:

- PCI RAID
- Software RAID
- Drive Swapping
- Drive Transporting
- Security
- Backup
- Testing
- Audio/Video Editing

DE75 FEATURES



Available in Beige and Black



DE75 receiving frame fits in any standard 5.25" HH bay



The DE75 Also Accommodates Undersized or Custom Bays

Rugged Steel-Constructed Drive Enclosure



Data Express.

- ▶ For 3.5" Low Profile SAS/SATA 3Gb/s, SCSI, SATA or PATA Drives*
- ▶ Accommodates Undersized or Custom Storage Bays
- ▶ Supports SAS/SATA 3Gb/s, Ultra ATA/133, SATA and Ultra160 SCSI
- ▶ Hot Swappable

Features	Benefits
Rugged Construction	Helps Protect Drive from Physical Damage
Hot Swappability	Allows Drive Carrier to be Removed While the System is Powered Up
"Soft Start" Circuitry	Eliminates Current In-Rush/Assures Data Integrity
Downward Compatible	Utilize Earlier Technology Hard Drives

*Hard Drive Sold Separately



Data Express DE75

DE 75 SAS/SATA 3Gb/s

Part Number	Description
6456-7100-0000	DE75, Complete Assembly, SAS/SATA 3Gb/s, RoHS, Beige
6456-7100-0500	DE75, Complete Assembly, SAS/SATA 3Gb/s, RoHS, Black

DE 75 SATA 1.5Gb/s

Part Number	Description
6056-5000-0500	Complete Assembly, SATA 1.5 Gb/s, Black
6057-5000-0500	Carrier Only, SATA 1.5 Gb/s, Black

DE 75 ATA/133

Part Number	Description
6056-0000-0000	Complete Assembly, ATA/133, Beige
6056-0000-0500	Complete Assembly, ATA/133, Black
6057-0000-0000	Carrier Only, ATA/133, Beige
6057-0000-0500	Carrier Only, ATA/133, Black

DE 75 68-PIN U160

Part Number	Description
6056-1000-0000	Complete Assembly, 68-pin, U160, Beige
6056-1000-0500	Complete Assembly, 68-pin, U160, Black
6057-1000-0000	Carrier Only, 68-pin, U160, Beige
6057-1000-0500	Carrier Only, 68-pin, U160, Black

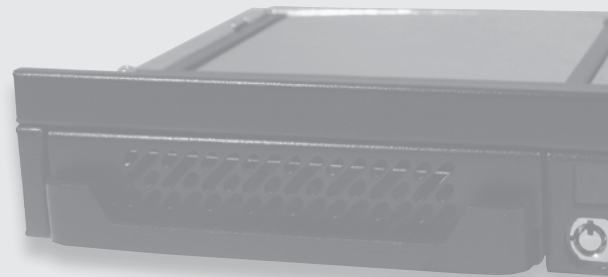
DE 75 80-pin U160

Part Number	Description
6056-2000-0500	Complete Assembly, 80-pin, U160, Black
6057-2000-0500	Carrier Only, 80-pin, U160, Black

For DE75 frame part numbers please see our website at www.CRU-DataPort.com

Specifications:

- Key lock/power on-off
- Hot swappable with host Support (SATA 1.5Gb/s, SAS/SATA 3Gb/s & SCSI models)
- “Soft Start” circuitry & anti-static device protection
- Highly-rated mating connectors support up to 25,000 insertions
- Cableless drive connector (SATA 1.5Gb/s, SAS/SATA 3Gb/s & SCSI models)
- Connector alignment pins (68-pin, ATA/133, SATA 1.5Gb/s & SAS/SATA 3Gb/s)
- LED indicator
- Highly-rated mating connector(s)
- Mounting hardware included
- 5 year warranty
- Available in Beige or Black
- Mating connectors support up to 25K insertions (2K on 80-pin models)
- DE75 PATA drive carriers can be used with DE75 Universal SATA receiving frames, allowing earlier-technology PATA drives to continue to be used with a SATA system



Design:

- Dimensions - 5.75" W x 8.15" L x 1.65" H (inches)
 - Weight 3.00 lbs.
- *Dimensions are for reference only