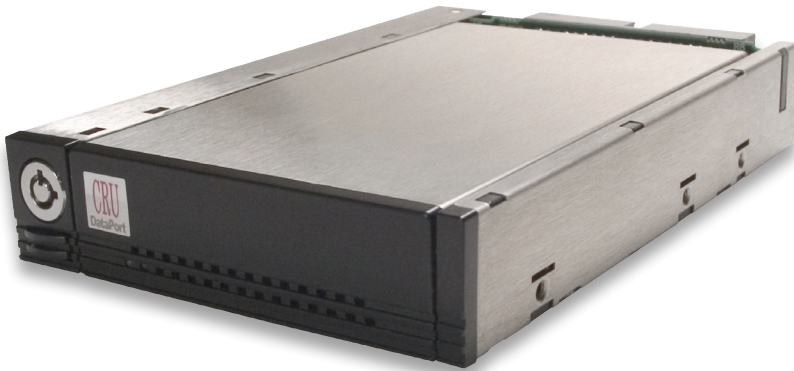


Protecting Your Digital Assets™



DataPort® 25

Small Form Factor Removable Drive Enclosure



DATAPORT 25D RUGGED EXTERNAL DOCK



All metal housing for any DataPort 25

Hot-mounts via USB 2.0

Mounting holes to install anywhere

- Fits in any standard 3.5" floppy drive
- Houses one or two 2.5" drives and makes them removable
- Universal frame supports IDE/ATA-6 and Serial ATA
- Heavy Duty stainless steel construction
- Dual drive features support RAID-1 mirroring and RAID-0 striping

APPLICATIONS:

- Limited Space Storage
- Rugged Mobile Systems
- Test Measurement
- Small Form Factor
- Mini RAID
- Custom OEM Chassis

FEATURES

BENEFITS

Installs in any standard 3.5" floppy drive bay

PC or Mac

Ideal for small form factor applications where space is critical

Small PC's mobile systems, surveillance, un-used floppy bay, etc.

Houses one or two 2.5" low profile drives; either IDE or Serial ATA

Two drives for double capacity. RAID-0 striping for performance. RAID-1 mirroring for data security.

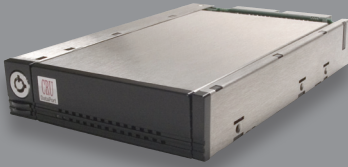
Universal frame supports both IDE and Serial ATA removable drive carriers

Swap between either technology and maximize your hard drive investment.

Retractable push-button eject mechanism

Saves space and eases HDD carrier removal

www.CRU-DataPort.com



DataPort 25

Part Number	Description
8510-0002-9500	Complete Assembly, IDE/ATA-6, 2 HDDs, RoHS
8511-0009-9500	Carrier Only, IDE/ATA-6, 2 HDDs, RoHS
8512-5502-9500	Frame Only, IDE/SATA, RoHS
8510-5002-9500	Complete Assembly, SATA, 2 HDDs, RoHS
8511-5009-9500	Carrier Only, SATA, 2 HDDs, RoHS
8512-5502-9500	Frame Only, IDE/SATA, RoHS

DataPort 25d IDE Rugged Dock

Part Number	Description
8570-3170-9500	External Case w/DP25, USB 2.0, IDE/ATA-6, 2 HDDs, RoHS
8572-3170-9500	External Case - Frame only, USB 2.0, IDE/ATA-6, RoHS
8531-0009-9500	Carrier Only, IDE/ATA-6, RoHS

DataPort 25d SATA Rugged Dock

Part Number	Description
8570-3370-9500	DP25 SATA Dock external USB 2.0 Enclosure w/ DP25 Dual SATA Drive, RoHS
8572-3370-9500	DP25 SATA Dock Enclosure only (no carrier) USB 2.0, Dual SATA Drive, RoHS
8511-5009-9500	DP25 Carrier Only, Dual SATA, RoHS

SPECIFICATIONS

DataPort 25

- Removable HDD carrier supports up to two 9.5mm low-profile drives
- Universal receiving frame supports both IDE and Serial ATA Carriers
- Front view LEDs indicate drive activity, power-on status and configuration errors
- Receiving frame mounts in any standard 3.5" floppy drive bay
- Heavy-duty stainless steel and die cast metal construction
- Interconnect rated at 25,000 insertions*
- Standard floppy power connector for ease of install
- Designed for maximum airflow and heat dissipation
- CE Certified and 3 year warranty

DataPort 25d Rugged Dock

- Rugged all metal external housing includes DataPort 25
- Multiple mounting holes to design into any environment
- Hot-Mounts via USB 2.0 (cable included)
- Mini external AC adapter (included)

DESIGN

DataPort 25 (complete assembly)

101.6mm W x 154.14mm L x 25.27mm H

DataPort 25 Removable Carrier

78.74mm W x 132.00mm L x 25.27mm H

DataPort 25d Rugged Dock

110.38mm W x 160.90mm L x 34.25mm H

RELIABILITY TESTING

CRU-DataPort reliability testing has determined the DataPort 10 connectors can withstand 25,000+ cycles (both insertion and ejection) without failure or degradation of signal quality. It would take a DataPort 10 carrier being cycled once every hour for over five years to match our rugged testing.

