



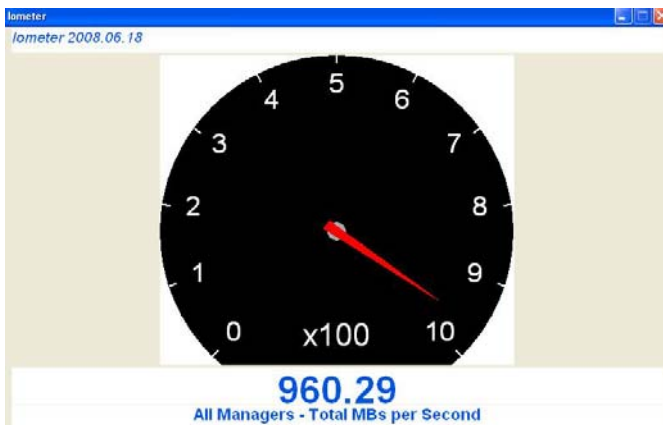
Kingston SATA SSD vs' High-Speed SATA HDD

Test Setup:

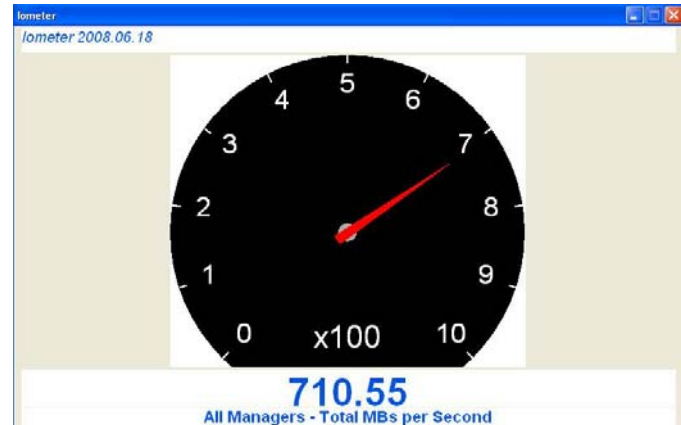
- Gygabyte - GA-P35T-DQ6 Mobo
- Intel Core 2 Duo E 6550 CPU
- Kingston *Hyperx DDR3 1333* Memory (Standard Speed)
- Adaptec 5085 SATA/SAS 8 Port PCIe RAID Card
- CRU-DataPort 4 Bay Mini SAS/SATA Enclosure
- (4) Kingston 32GB SATA SSD (SLC) – Array 1
- (4) 250GB SATA HDD's 7200 RPM 16MB Buffer – Array 2
- RAID 0 Stripe-Set for each disk group
- Intel I/OMeter Performance Measuring Tool
- I/OMeter Setup – 1 Worker, Queue Depth 16, 128k Data Size, 100% Seq., 100% Read/Write

The Results:

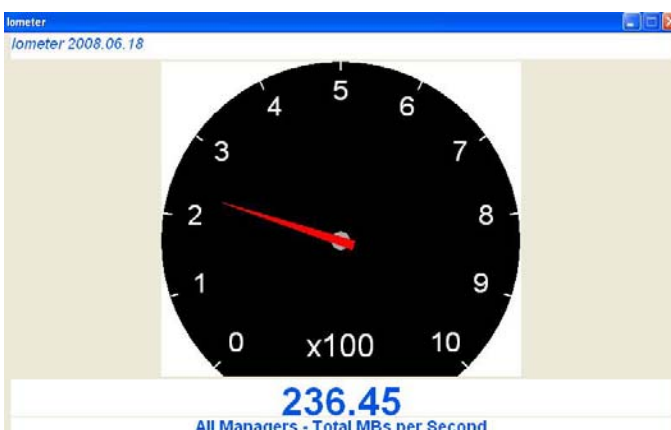
SSD Read Performance



SSD Write Performance



HDD Read Performance



HDD Write Performance

