

Data Express DE75 SCSI Wide U160 Install Guide

Removable SCSI Wide Ultra160 Drive Enclosure

NOTE: For SCSI Ultra160 operation, the Ultra160 DE75's require Ultra160 chassis and cabling.

Drive Installation Overview



Option Pins

Remote Unit ID Selection: Pins 1-8 of this connector are provided for remote unit SCSI ID selection through the computer system. Remote ID selection requires that the unit ID switch located on the inside of the receiving frame be set to "0" (onboard ID selection is set with a switch located on the inside of the receiving frame – see **Selecting the Unit ID Number** section).

Remote Activity LED: Pins 11 & 12 provide power for a remote LED device activity indicator.

Jumpers: Installed at factory - Do Not Remove!

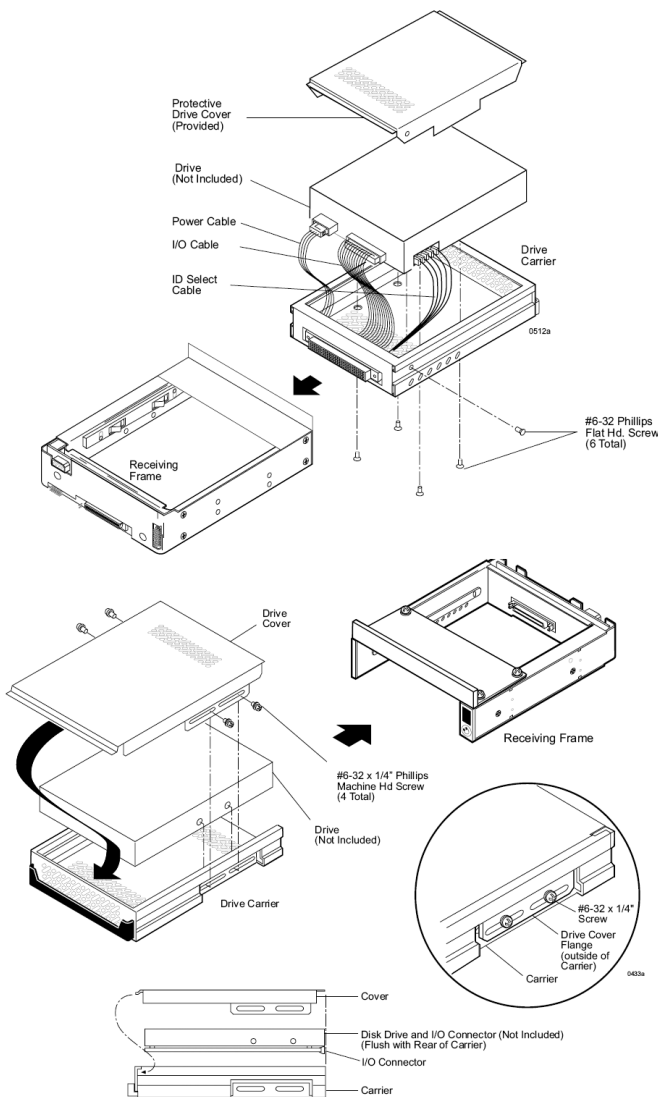


Figure1: Drive Installation Overview

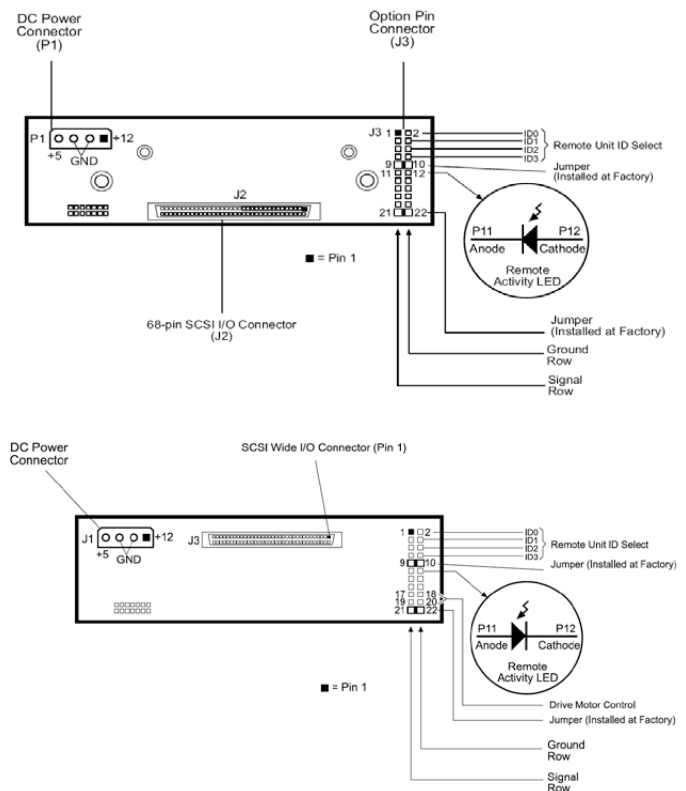


Figure 2: Receiving Frame Motherboard

Typical 2mm Drive ID Pin Configuration

Note: Applies to the DE75i-SW160 only.

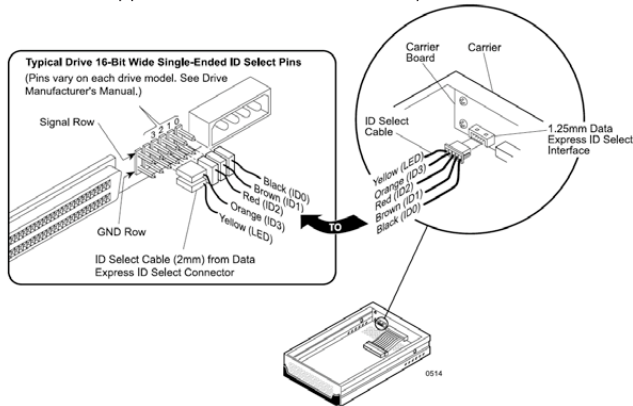


Figure 3: Typical ID Select Connections (2mm Drive Pins)

Figure above illustrates a typical SCSI ID select connection to a drive with 2mm ID select pins. The wires on the wire harness connect to the positive pin (or signal pins) on the disk drive. In some cases, the drive manufacturer will label the signal pins as Pin 1, 3, 5, 7, (instead of 0, 1, 2, 3 as shown in figure below). Also, in some cases, the even numbered Pins 2, 4, 6 are used for Ground.

Attach the ID select cable to the drive using the 2mm connectors. Align the "ID0" pin with the black wire. Attach the 1.25mm connector on the other end of the ID select cable to the 1.25mm connector (J3B) provided on the signal distribution board, located inside the carrier. Refer to the manufacturer's documentation to disable termination on the drive.

Selecting the Unit ID Number

Use the alignment tool (provided) to select the ID number of the disk drive.

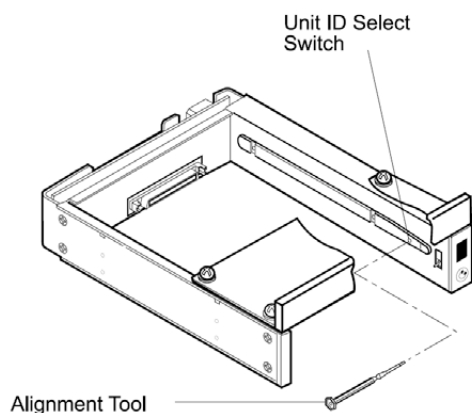


Figure 4: Unit ID Select Switch Location

NOTE: The lock on the Data Express serves as a power switch. It must be engaged (turned counterclockwise) for the Data Express to power up and function properly.

Limited Product Warranty

CRU-DataPort (CRU) warrants the Data Express DE75 to be free of significant defects in material and workmanship for a period of five years from the original date of purchase. CRU's warranty is nontransferable and is limited to the original purchaser.

Limitation of Liability

The warranties set forth in this agreement replace all other warranties. CRU expressly disclaims all other warranties, including but not limited to, the implied warranties of merchantability and fitness for a particular purpose and non-infringement of third-party rights with respect to the documentation and hardware. No CRU dealer, agent or employee is authorized to make any modification, extension, or addition to this warranty. In no event will CRU or its suppliers be liable for any costs of procurement of substitute products or services, lost profits, loss of information or data, computer malfunction, or any other special, indirect, consequential, or incidental damages arising in any way out of the sale of, use of, or inability to use any CRU product or service, even if CRU has been advised of the possibility of such damages. In no case shall CRU's liability exceed the actual money paid for the products at issue. CRU reserves the right to make modifications and additions to this product without notice or taking on additional liability.

Certification

EMI Standard: FCC Part 15 Class B, CE
EMC Standard: EN55022, EN55024

FCC Certification

This device has been tested and found to comply with the limits for a Class B digital device, pursuant to Part 15 of the FCC rules. Operation is subject to the following two conditions:

1. This device may not cause harmful interference, and
2. This device must accept any interference received; including interference that may cause undesired operation.

Register your product at www.CRU-DataPort.com

A7-075-0003 Rev. 1