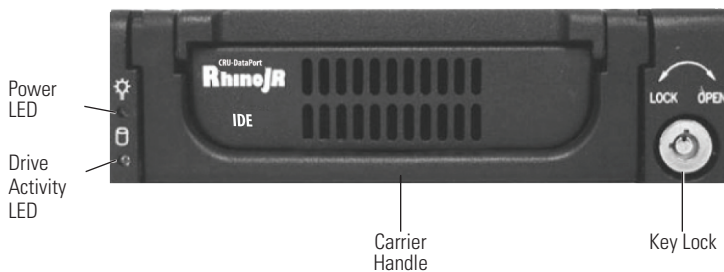


RhinoJR RJR110 IDE

Removable Ultra ATA100 Drive Enclosure

Note: For applications requiring frequent drive swapping or replacement, CRU-DataPort recommends the rugged DataPort or Data Express removable enclosures for high insertion environments.

Figure 1: Front Panel



Front Panel

Key Lock/Drive Power Switch: Performs three functions. The key switch assures proper seating of the drive carrier within the receiving frame, turns power to the drive carrier ON and OFF, and prevents unauthorized removal or installation of the carrier. For the computer to access data on the disk drive, the key must be turned counterclockwise to the locked position.

LEDs: Power - Steady glow indicates power ON.

Drive Activity- Steady glow indicates that drive is inserted and ready for access.

Flashing indicates drive is being accessed.



Rear Panel

DC Power Connector: Uses a standard 4-pin DC Power Connector to accept DC power.

I/O Connector: The input/output connector provides a standard interface for all IDE signals.

Fan: Receiving frame fan provides enhanced heat dissipation (4.7 CFM).

Installation

NOTE: A #1 and #2 Phillips screwdriver will be required.

1. Remove cover from the carrier by turning screw clockwise. Slide the cover off carrier (Figure 3).
2. Carefully insert drive (not included) into the carrier. Slide the drive towards the rear of the carrier. If necessary, loosen the adjustment screw and adjust the carrier DC power connector (Figure 4) so that the drive connectors can mate with the carrier connectors. Once the drive and carrier are mated, tighten the adjustment screw to secure power connector into place.

Turn the drive/carrier assembly over.

3. Bottom-mount the drive into the carrier with four (4) Phillips screws (Figure 5). Reinstall cover onto the carrier.

Secure the cover by turning the screw counterclockwise a few rotations only (too many rotations will remove screw).

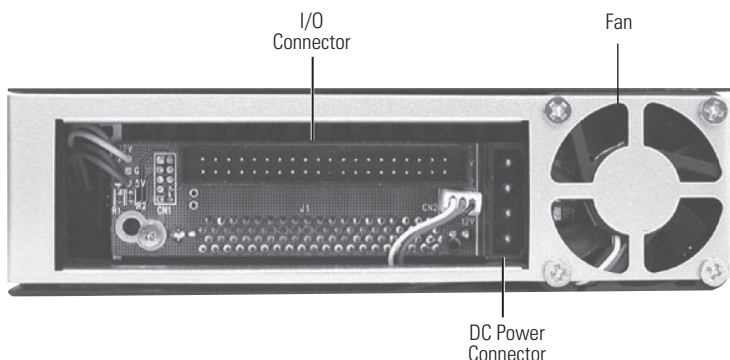


Figure 2: Rear Panel

Product Warranty

CRU-DataPort (CRU) warrants the Data Express RJR110 to be free of significant defects in material and workmanship for a period of two years from the original date of purchase. CRU's warranty is nontransferable and is limited to the original purchaser.

Limitation of Liability

The warranties set forth in this agreement replace all other warranties. CRU expressly disclaims all other warranties, including but not limited to, the implied warranties of merchantability and fitness for a particular purpose and non-infringement of third-party rights with respect to the documentation and hardware. No CRU dealer, agent or employee is authorized to make any modification, extension, or addition to this warranty. In no event will CRU or its suppliers be liable for any costs of procurement of substitute products or services, lost profits, loss of information or data, computer malfunction, or any other special, indirect, consequential, or incidental damages arising in any way out of the sale of, use of, or inability to use any CRU product or service, even if CRU has been advised of the possibility of such damages. In no case shall CRU's liability exceed the actual money paid for the products at issue. CRU reserves the right to make modifications and additions to this product without notice or taking on additional liability.

Certification

EMI Standard: FCC Part 15 Class B, CE
 EMC Standard: EN55022, EN55024

FCC Certification

This device has been tested and found to comply with the limits for a Class B digital device, pursuant to Part 15 of the FCC rules. Operation is subject to the following two conditions:

1. This device may not cause harmful interference.
2. This device must accept any interference received; including interference that may cause undesired operation.

Register your product at www.CRU-DataPort.com.

A8-110-0002 Rev. 1.1

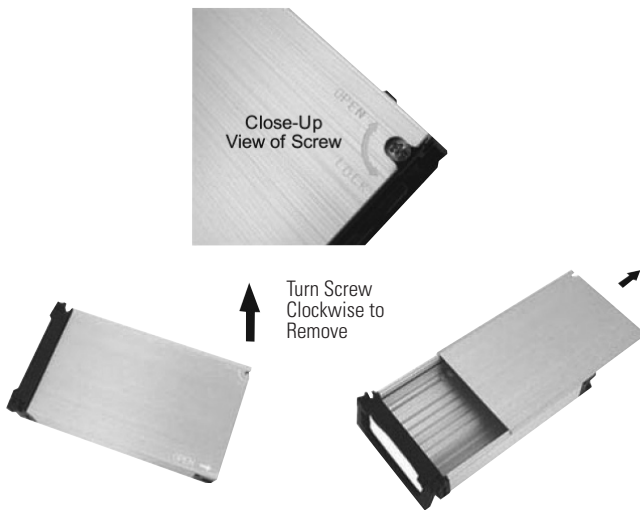


Figure 3: Cover Removal

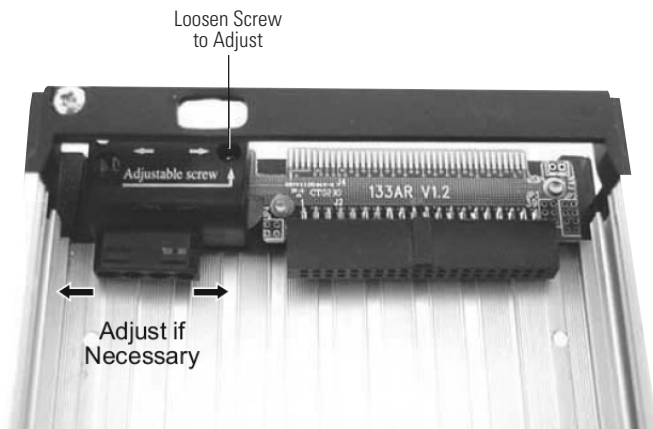


Figure 4: Adjusting DC Power Connector

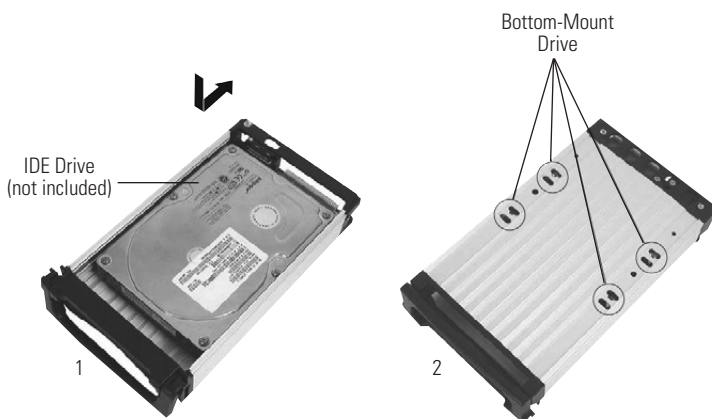


Figure 5: Installing a Drive into the Carrier